



North East London

North East London Integrated Care System (ICS) and the Integrated Care Board (ICB)

For information only

Health and care in North East London

- The formal alliance of partners with a role to improve the health and wellbeing of residents in North east London is the North East London Integrated Care System (NEL ICS). This is known as the [North East London Health and Care Partnership](#) (NEL HCP).
- Our ambition is to work with and for everyone in north east London, a richly diverse and growing population, to create meaningful improvements in health, wellbeing and equity.
- In July 2022 our Integrated Care Partnership was formally established. This is a statutory committee that brings together a broad set of system partners (including local government; the voluntary, community and social enterprise sector; NHS organisations; and wider partners) to work together with local people to plan and deliver joined up health and care services.
- Our partnership brings huge potential to work together as a system towards a much greater focus on population health outcomes and tackling inequalities, recognising the assets held by local people and communities improving their health and wellbeing outcomes
- We do this by bringing together health partners, local authorities and the voluntary, community and social enterprise sector, with residents, patients and service users to improve how we plan and deliver care and support services.
- To help guide our work, we have agreed four priorities where we want to create measurable change:
 - ✓ **Employment and workforce** – to work together to create meaningful work opportunities and employment for people in North east London now and in the future.
 - ✓ **Long term conditions** – to support everyone living with a long-term condition in North east London to live a longer, healthier life and to work to prevent conditions occurring for other members of our community
 - ✓ **Children and young people** – to make North east London the best place to grow up, through early support when it is needed and the delivery of accessible and responsive services.
 - ✓ **Mental health** – to transform accessibility to, experience of and outcomes from mental health services and well-being support for the people of NEL.
- You can find out more about the North east London health and care system, such as [our strategy](#) and [our joint forward plan](#) on the [North East London Health and Care Partnership website \(northeastlondonhcp.nhs.uk\)](#)

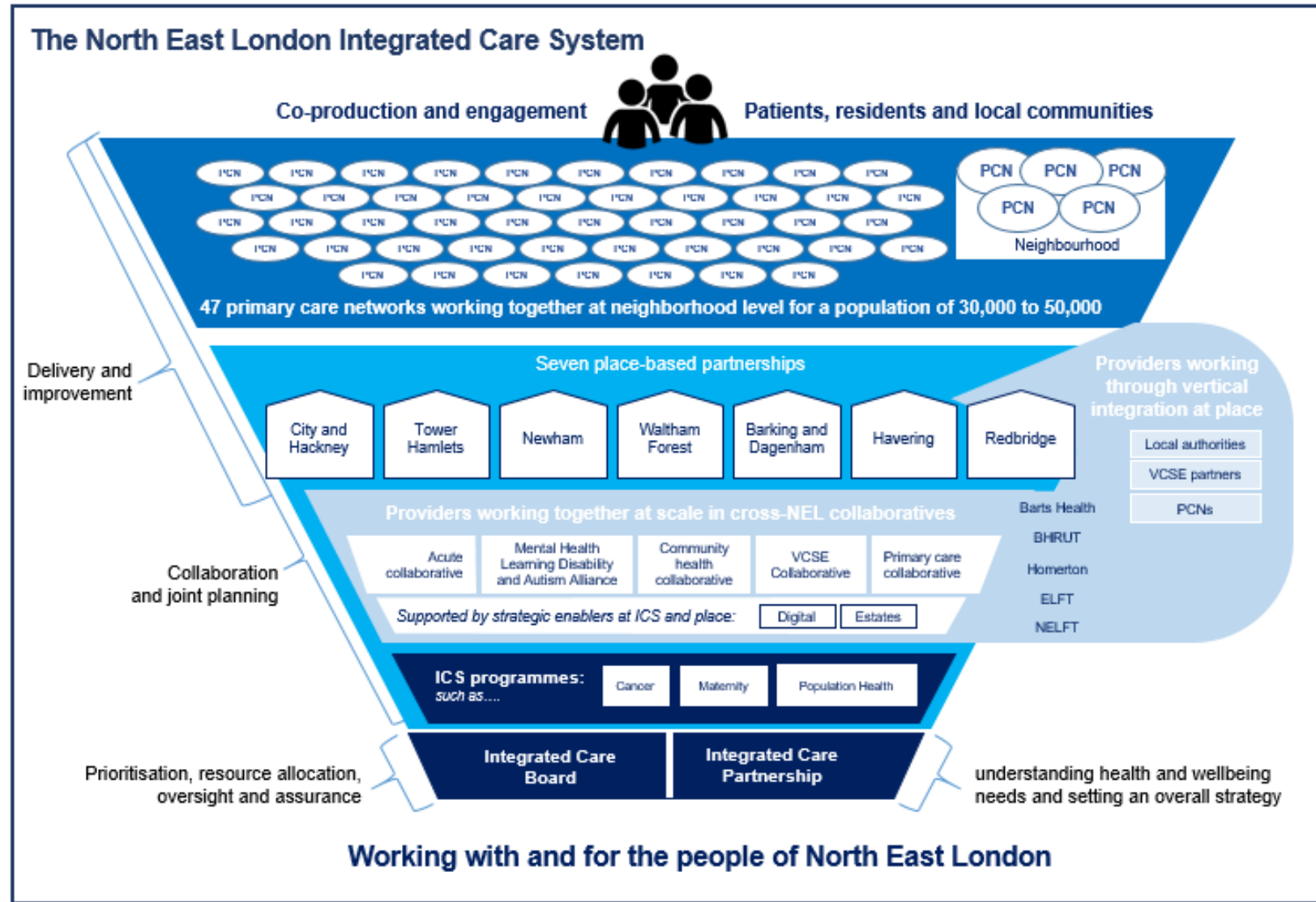
Our partnership

We each as partners and as a partnership have an impact on the people of NEL – some providing care, others involved in planning services, and others impacting on wider determinants of health and care, such as housing and education.

Our partnership between local people and communities, the NHS, local authorities and the community and voluntary sector, is uniquely positioned to improve all aspects of health and care as well as addressing the wider determinants of health such as employment, housing or poverty.

With hundreds of health and care organisations serving more than two million local people, we have to make sure that we are utilising each to the fullest and ensure that work is done and decisions are made at the most appropriate level.

Groups of partners coming together within partnerships are crucial building blocks for how we will deliver. Together they play critical roles in driving the improvement of health, wellbeing, and equity for all people living in north east London.



Developing a local system

- Five collaboratives – all evolving and shaping their areas of focus and ways of working
 1. Acute Provider Collaborative - 6 transformation programmes focused on Urgent and Emergency Care, Planned Care, Cancer, Critical Care, Maternity and LMNS, Babies, Children and Young People
 2. Primary Care Collaborative – oversight of NEL primary care system transformation, addressing inequalities, driving up quality, involving local people
 3. Community Care Collaborative – initial deep dives into Speech and Language Therapy and Virtual Wards, building engagement with all community health service providers
 4. Mental Health, Learning Disability and Autism Collaborative – service use and carer leadership, developing improvement networks, governance
 5. Voluntary, Community and Social Enterprise Collaborative – development model to work through areas of greatest impact and ways of working
- Five NHS Provider Trusts – across our geography, offering a range of services to our diverse communities
 - Represented in the collaboratives and the Place Partnerships
- Seven Place Partnerships – take a population approach reflecting local and system priorities, engaging with Trusts and Collaboratives across a range of issues with partnerships involving Provider Trusts, Collaboratives, Primary Care and the ICB as well as local authorities, the voluntary, community and social enterprise sector and local people
 - Key links into Safeguarding Partnerships, Community Safety Partnerships and wider regeneration and development
 - Opportunity to engage strategically in issues such as population growth, Climate Emergency and sustainability, inequalities and inequity

North East London Integrated Care Board (NEL ICB) or NHS North East London

- The Integrated Care Board (NHS North East London) is the statutory organisation responsible for developing a plan for meeting the health needs of the local population.
- We do this through planning and commissioning health services across north east London to meet our population's needs, making sure all parts of the local health system work effectively together. We bring together health partners, local authorities and the voluntary, community and social enterprise sector, alongside residents, patients and service users to improve how we plan and deliver care and support services.
- We set strategies, policies and plans where these are best done at the scale of the whole of north east London. We also set the overall financial strategy for the local health system and make sure that everyone can get core services in an appropriate setting.
- We serve the population of north east London across our eight local authority areas: Barking and Dagenham; City of London; Hackney; Havering; Newham; Redbridge; Tower Hamlets; and Waltham Forest.
- We are structured in six departments under the leadership of the Chief Executive: Zina Etheridge
 - Medical department
 - Nursing department
 - Participation and place department
 - People and culture department
 - Finance and performance department
 - Strategy and transformation department
- You can find out more about [our organisation](#) such as our board and our governance and [our vision and priorities](#) on our [website](#)

Place Directorates

North east London's seven place partnerships are uniquely placed to drive the integration between health and care that will improve local people's wellbeing, through co-produced approaches that build on community assets. As partnerships, they understand their communities and the inequalities that local people face. Reshaping North east London's health and care system so that it is equitable, delivers improved wellbeing for everyone, and is financially sustainable, will happen only if we work together to deliver at neighbourhood, place, collaborative, and system. Each element of the system needs to be accountable for its part of our improvement journey and to work together alongside local people and communities to effect change sustainably.

The place directorates in the Participation and Place Department work in Barking and Dagenham; City and Hackney; Havering; Newham; Redbridge; Tower Hamlets and Waltham Forest.

- To address the unique challenges and opportunities the teams focus on working locally with partners to support improved outcomes across a full range of areas including prevention and early intervention, community resilience, mental health and learning disabilities, special educational needs, maternity, long term conditions, wider health and wellbeing, carers and unplanned care
- The composition of each directorate varies depending on local culture, history, communities, and agreements with local authorities and partners; however each is structured around the key life stages of Start Well, Live Well and Age Well, with teams for strategic planning, infrastructure and delivery supported from across the ICB.